



PROFESSIONAL SERVICES PROCUREMENT BULLETIN 2010-01 HART

COUNTY	Hart
ROUTE	KY 88
DISTRICT	4-Elizabethtown
ITEM NO.	4-8501
PROJECT DESCRIPTION	Reconstruction/Spot Improvements on KY 88 between Logsdon Valley Road and County Barn Road
PROJECT LENGTH	2 miles
PROJECT MANAGER	John Moore, PE
USER DIVISION	Division of Highway Design
APPROXIMATE FEE	\$250,000 Phase I Preliminary Engineering \$350,000 Phase II Final Roadway Design
PROJECT FUNDING	State Funds (Bonds)
PURPOSE AND NEED	The project purpose is to address geometric deficiencies along this stretch of highway that has a mixed use from daily commuter, recreational users, and non-motorized vehicles. This stretch of roadway has 6 horizontal and 9 vertical curves that do not meet rural 55 mph design criteria. Existing roadway has 10-ft lanes with no shoulder. Limited sight distance with high speed differential between recreational traffic unfamiliar with the mixed use nature of the roadway and horse-drawn vehicles created a significant safety issue.
DBE REQUIREMENT	None

SCOPE OF WORK

The Selected Consultant will be required to provide engineering services to perform Phase I Preliminary Engineering and Phase II Final Roadway Design, including the preparation of any design studies, drainage design, right-of-way plans, construction plans, traffic control plans and cost estimates.

SPECIAL INSTRUCTIONS

The purpose of the design contract is to provide Phase I Preliminary Engineering and Phase II Final Roadway Design. The initial contract agreement will be for Phase I Preliminary Engineering services only. Phase II Final Roadway Design may be added by contract modification. Phase II units may be negotiated at the end of Phase I after a preferred alignment has been selected.

Instructions for Response to Announcement can be found at:
http://transportation.ky.gov/progperform/instructions_for_response_to_kentucky_transportation_cabinet_10-10-08.pdf

AVAILABLE STUDIES

[KY-88 from Munfordville to KY-479 - Programming Study Hart & Grayson Counties](#)

METHOD OF DESIGN

The Selected Consultant shall develop highway plans utilizing the most recent CADD Standards for Highway Plans policy. Consultant is encouraged to utilize InRoads XM for this project.

PHOTOGRAMMETRIC SERVICES

Department will provide Photogrammetric information to Consultant.

STRUCTURE DESIGN

The Department will provide all Structure Design Services required for the project. Structure Design Services will not be a part of the Selected Consultant contract.

If the Department requires Consultant Services for Structure Design in the future, an advertisement for services will be issued at that time.

ENVIRONMENTAL

The Department will provide any necessary Environmental Services.

GEOTECHNICAL

The Department will supply any Geotechnical Services required for the project.

UTILITY DESIGN	The Selected Consultant may be requested to provide utility related services for this project.
TRAFFIC	The Selected Consultant may be requested to provide traffic related services for this project.
PREQUALIFICATION REQUIREMENTS	
To respond to this project, the project team must be prequalified in the following areas by the date of this advertisement.	
<u>ROADWAY DESIGN</u>	<ul style="list-style-type: none"> • Rural Roadway Design > \$250,000 • Surveying
PROJECT SCHEDULE & MILESTONES	
The selected consultant is expected to meet the scheduled milestone dates.	
RESPONSE DATE	August 5, 2009 4:30 p.m. E.S.T. (Frankfort time)
SELECTION COMMITTEE MEETING	August 26, 2009
PRE-DESIGN CONFERENCE	September 9, 2009
TENTATIVE DEADLINE FOR CONSULTANT FEE PROPOSAL	September 23, 2009
CONTRACT NEGOTIATIONS	October 7, 2009
NOTICE TO PROCEED	November 4, 2009
PRELIMINARY LINE & GRADE INSPECTION	May 1, 2010
JOINT INSPECTION	November 1, 2010
RIGHT-OF-WAY UTILITY PLANS	January 1, 2011
FINAL PLANS	December 15, 2011

EVALUATION FACTORS

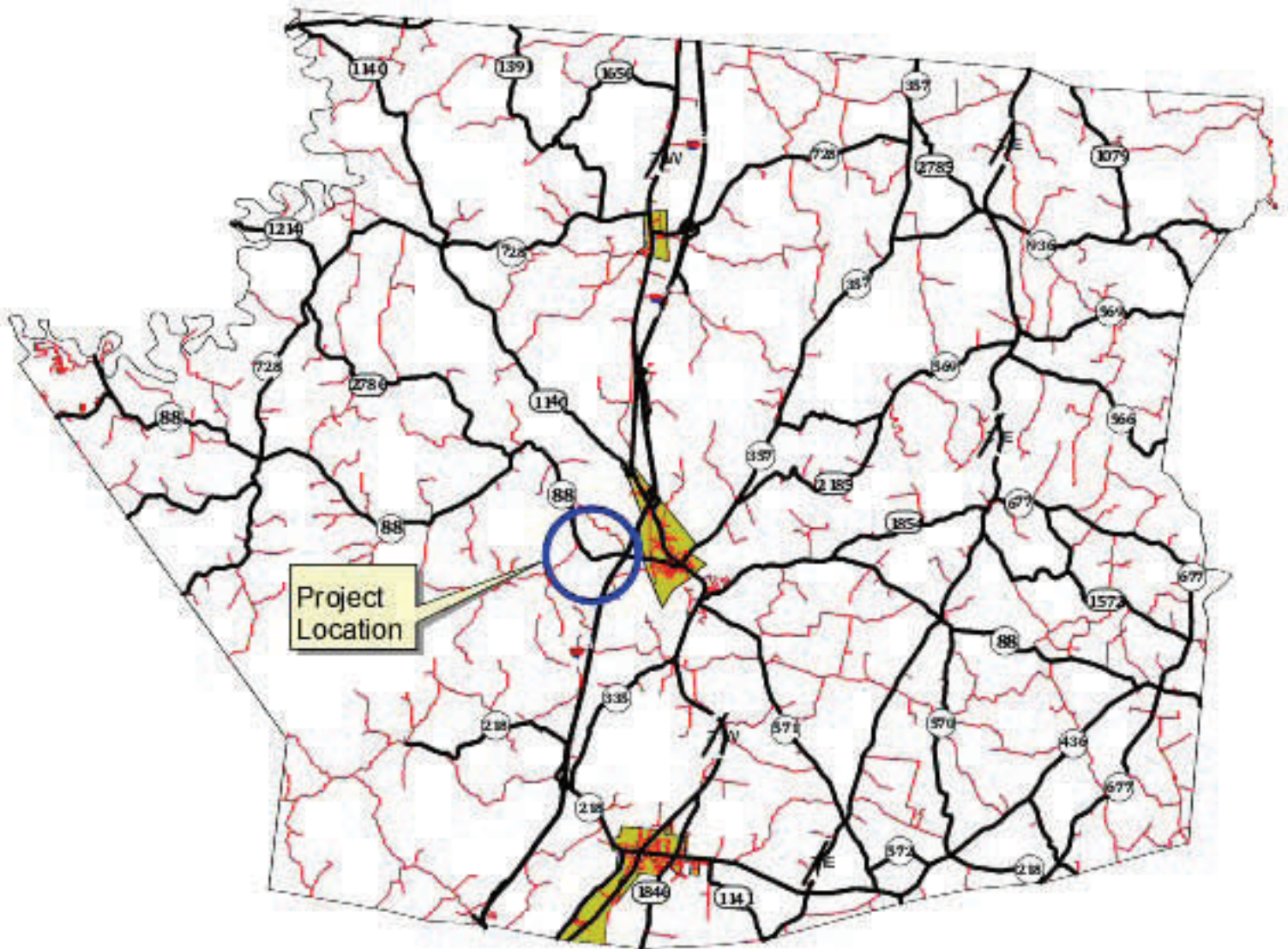
1. Relative experience of Consultant personnel assigned to project team with highway projects for KYTC and/or for federal, local, or other state governmental agencies. (10 points)
2. Capacity to comply with project schedule. (10 points)
3. Past record of performance on project of similar type and complexity. (10 points)
4. Project approach and proposed procedures to accomplish the services for the project. (10 points)
5. Consultant's Kentucky office where work is to be performed. (2 points)
 - 75%-100% of work accomplished in Kentucky offices (2 points)
 - 26%-74% of work accomplished in Kentucky offices (1 point)
 - 0%-25% of work accomplished in Kentucky offices (0 points)

SELECTION COMMITTEE MEMBERS

1. John Moore PE, User Division
2. Brad Eldridge, PE, User Division
3. Ryan Griffith, PE, Secretary's Pool
4. Vicki Boldrick, PE, Secretary's Pool
5. Jim Shipp, PE, Governor's Pool

Hart County

04 050 D0088 2^00



This map was prepared by the BRADD Transportation Department, November 2004.